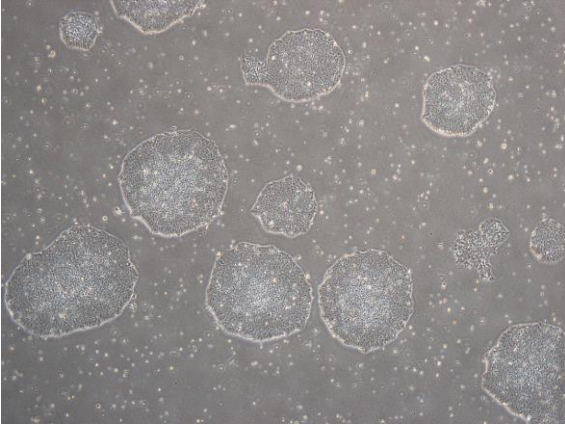
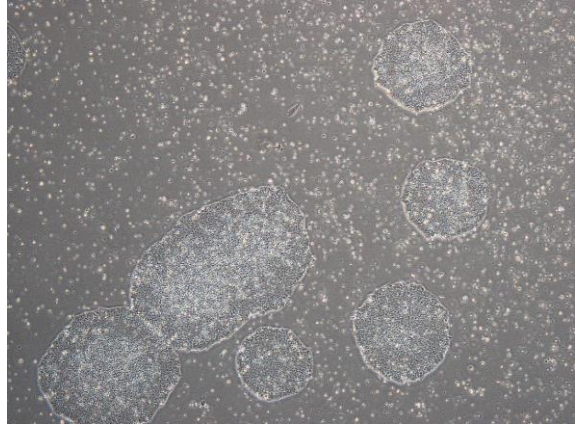


## 【 CiRA-j-1299 】 Morphology of iPSC colonies

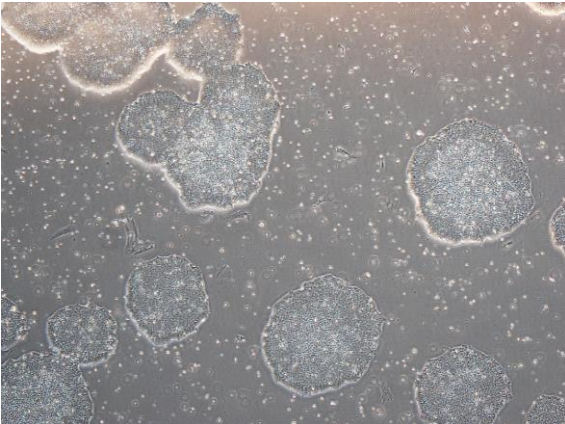
CiRA-j-1299-A: passage-2



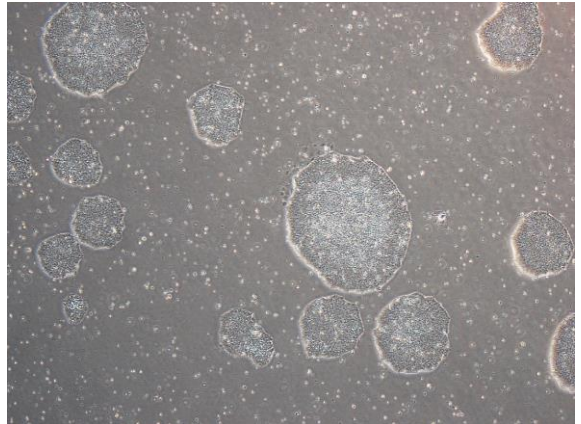
CiRA-j-1299-B: passage-2



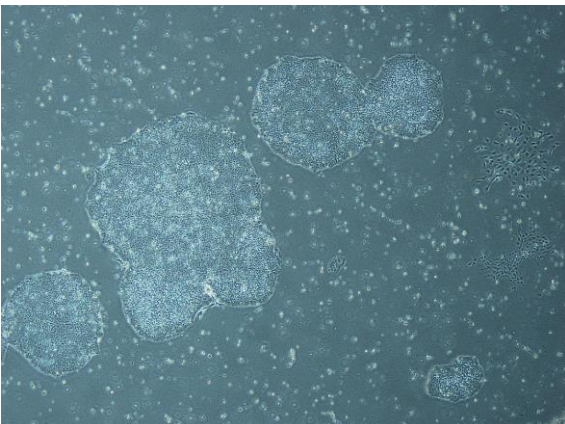
CiRA-j-1299-C: passage-2



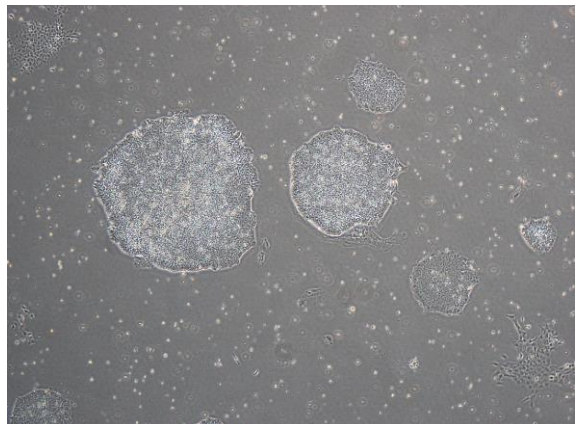
CiRA-j-1299-D: passage-2



CiRA-j-1299-E: passage-3



CiRA-j-1299-F: passage-2



( All images were captured at 4x magnification )